

The Implementation of Child-Friendly City Policy by the Local Community in Depok, Indonesia



Dr. Jeanne Noveline Tedja, M. Kesos

Universitas Nasional, Jl. Sawo Manila Pejaten Barat, Pasar Minggu, Jakarta, Indonesia

ABSTRACT: Child-Friendly City (CFC) is a policy developed by Government to ensure the fulfillment of child's rights. The policy was born as a follow-up action to the UN Convention on the Rights of the Child and is an attempt by the Government to improve child welfare. Depok City in West Java, Indonesia is one of the cities who committed to implement this policy since 2010. The research is a policy study that analyzes the interpretation of CFC policy within the local community (RW). This research uses a qualitative approach and based on its benefits is social policy research. The knowledge gained as a result of a social policy research can be used for particularly beneficial for disadvantaged populations, which in this study are children. In implementing the CFC policy in the RW community, the author analyzes the dynamics of the implementation of a Child-Friendly RW, which is then divided into two cases. In the first case, the community has three variables that have been identified, namely: the quality of the community, community assets attached to the community, and the existence of a change agent. These three variables make motivations come from within the community which give rise to initiatives that lead to high community participation and manifest in various activities of fulfilling children's rights, which then has an impact on behavior change in the community. These three variables were not found in the second case of child-friendly RW, where the people in the community was passive so that there was no change in behavior in children or the community in general. As a recommendation, the authors encourage the community to increase its awareness towards current issues happens in the neighborhood, and the public policies that have great benefits for the community. In addition, the community must also proactively broaden their horizons by accessing the latest information from media.

KEYWORDS: child friendly city; child welfare; community participation; social policy; child-friendly neighborhood.

I. INTRODUCTION

Children are the next generation of a nation, and have a strategic position in the development of the nation and the development of human civilization. Children are also the most valuable resource (Hoover in Wallace, 2001, p.133). *First*, children are the next generation as well as determine the quality of human resources in the future. Therefore, the sustainability of a nation is determined by the condition of its children at this time. *Second*, children are the main source of the labor force. The ability to optimize the potential of children will affect the quality of life of the nation in the future. *Third*, children are the assets of the nation's civilization. In the future, various innovations in the economic, social, cultural, and technological fields will continue to develop dynamically and depend on the quality of today's children. Various views on children lead to the essence of understanding that a child is a human being, who has inherent rights to himself as human rights have by adults. In the past, children were considered as 'property' of their parents, so that other parties did not have the legitimacy to intervene in protecting children from physical, sexual or emotional violence. Only about half a century ago, the child's status has developed from being a parent's 'property', to being a full human being who has rights (Hart & Pavlovic, 1991 in Quennerstedt, 2009, p.1; Ife 2001, p.47). However, there are still many violations against children's rights. Children are weak and vulnerable targets, where their basic rights are often violated (Sousa and Araujo, 2011, p.3).

This fact is the background for the birth of the United Nations Convention on the Rights of the Child (CRC) or the United Nations Convention on the Rights of the Child (CRC) in 1990 which aims to protect children's rights. These include: the right to life, freedom of expression, the right not to be separated from parents, freedom from violence and neglect, freedom from economic and sexual exploitation, freedom from torture, as well as the right to basic health, social security, the right to a decent standard of living, as well as the right to education. The CRC consists of 54 articles consisting of the rights of the first and second generations (the rights of the first and second generations in Human Rights), where the protected rights emphasize the best interests of the child. Countries that have ratified the CRC are obliged to fulfill, protect and respect the rights of these children to achieve social welfare. State responsibilities and obligations should be realized in the form of systematic, structured and concrete policies, programs, activities and budgets. The social structure must change if the state is serious about protecting children's rights and so that children are free from discrimination (Howe, 2009, p. 128). Social welfare will be achieved if qualitative changes in the social structure can

The Implementation of Child-Friendly City Policy by the Local Community in Depok, Indonesia

be made where the community, in this case the group of children, can experience the same treatment (non-discrimination). Adi (2013) said, "Welfare is the right of every citizen" (p. 108).

The development of children's welfare is an important agenda, because children are vulnerable individuals and are completely dependent on adults. In his argument, D'Onofrio (2004, p.75) says that children cannot defend themselves because they are still in the stage of development both physically and mentally. Therefore, welfare rights protect children to ensure the fulfillment of physical needs by getting adequate nutrition, shelter, security, physical health and non-physical health, such as affection and intellectual stimulation (at home and at school) as well as a sense of emotional security. D'Onofrio (2004) further argues, "There is an unequivocal relationship between the manner in which children are raised (physically, emotionally, and intellectually) and their ability to succeed as independent adult agents later in life". "Child welfare intervention may alter the child's environment, leading to a new level of functioning, through several means" (p.1-2). The environment does not only refer to the natural environment or buildings around the child's residence, but rather to the overall physical environment (infrastructure), psychology, economy, and culture. Therefore, the definition of a proper and child-friendly environment according to Horelli (2007) is more comprehensive, namely: "... a complex multi-dimensional and multi-level concept. Refer to environmental arrangements and structures that provide support to children individually and in groups, which pay attention to children's problems so that children can build and implement their goals" (p.270).

In Indonesia, to fulfill the rights and protection of children, the Government has ratified the CRC through Presidential Decree no. 36 of 1990. This is in line with Article 28B (2) of the 1945 Constitution which states that every child has the right to survival, growth and development and the right to protection from violence and discrimination. The government then also passed Law No. 23 of 2002 on Child Protection, as well as various other laws and regulations relating to child welfare and protection of children's rights. The government then develops a development model that focuses on the fulfillment of children's rights which is implemented through the Child Friendly City (CFC) development model, which was initiated by the State Ministry for Women's Empowerment and Child Protection (MWECP) of the Republic of Indonesia. The main concept of CFC is to integrate the potential of existing development resources in each region for the sustainable fulfillment of children's rights. At the end of 2010, Depok City in West Java, Indonesia became one of the cities designated by MWECP as a pilot city, on the grounds that Depok City was strategically located close to Jakarta as the capital of the State and the rapid Population Growth Rate in Depok City. In 2011, Depok Mayor Nurmahmudi Ismail then made CFC one of the primary programs set out in the Depok City Medium-Term Development Plan (RPJMD) 2011-2016. It should be noted that children's rights protected in the CFC policy consist of 5 clusters, namely, the first cluster, civil rights and freedoms; the second cluster, alternative care rights and family environment; the third cluster, the right to health and welfare; the fourth cluster, the right to education, the use of leisure and cultural activities; and the fifth cluster, special protection rights. In the Regulation of the State Minister for Women's Empowerment and Child Protection No. 12 of 2011, 31 indicators of children's rights were set as the elaboration of the 5 clusters, which became the reference for achieving the fulfillment of children's rights for districts/cities implementing this policy. The CFC policy is believed to be a preventive intervention in preventing problems for children. Shireman (2003, p.1-3) argues, child welfare should be pursued for all children, not only for children who need special protection. Therefore, child welfare efforts are also efforts to prevent problems, in addition to efforts to overcome problems.

Interestingly, the implementation of CFC in Depok City is not only about institutional strengthening (top-down implementation), but also carried out in the RW/Rukun Warga (local community) environment which involves community participation (bottom-up implementation). Community participation or participation is very important in realizing this policy, because actually CFC is a district/city development system that integrates government, community and business commitments and resources that are planned in a comprehensive and sustainable manner in programs and activities to fulfill children's rights and protection. In community participation, the role of change agents is very important. Change agents play a role as enablers in empowering the community. The implementation of bottom-up policies involving community participation is a community development effort, where various resources or capital are required for the development, known as 'community assets'. According to Green & Haines (in Adi, 2013, p.239), there are seven assets that can be used as capital for the development of a region including: human capital, namely: abilities and skills possessed by workers that affect their productivity. Human capital talks about quality human resources so that they can master technology that is beneficial to society, be it simple technology or sophisticated technology. *Social capital* namely the norms and rules that bind the community members who are in it, and regulate the behavior patterns of citizens, as well as elements of trust (trust), and networking (networking), between community members or community groups (Adi, 2013, p. 258). According to Green and Haines (2012), the challenge in social capital is for the community to create or have a common vision that will strengthen the bonds between people in the community. *Physical capital*, is one of the basic capital contained in every society that lives in a traditional and modern society. There are two main groups in physical capital, namely buildings and infrastructure. The buildings in question are houses, shops, offices, commercial buildings, and so on. *Financial capital*, namely financial support owned by a community that can be used to finance the development process carried out in that community. *Environmental capital*, It can be in the form of unprocessed potential and has a high economic value, and has a high value in efforts to preserve nature and also the comfort of life for humans and other living creatures. *Political capital*, namely access to decision

The Implementation of Child-Friendly City Policy by the Local Community in Depok, Indonesia

makers. There are two types of political capital, namely instrumental and structural political capital. Instrumental political capital consists of resources that can be used by implementers to influence policies in accordance with their wishes. While structural political capital is an attribute of the political system that shapes participation in decision-making. In this case, Green and Haines say that power is the heart of political capital. Technology capital, related to the availability of appropriate technology that is useful for the community, and not just sophisticated digital technology, but not necessarily beneficial for the community. The seven capitals are assets inherent in every community which can sometimes be the strengths of a community and on the other hand can also be seen and identified as some of the aspects that are weaknesses in that community.

Participation also places community representatives through community organizations that have an important role in voicing community aspirations towards the policy-making process for the benefit of the community itself. The involvement of this community participation makes the CFC policy a participatory public policy, namely a policy whose substance and process involve all stakeholders in a sustainable and proportional manner (Hamdi, 2014, p.148). The essence of participatory public policy is agreement on the pattern of actions that will be taken in realizing the greatest benefit for as many people as possible. That is, implied in the participatory nature is a great benefit for the community. The assumption is that the higher the degree of participation, the higher the degree and scope of its benefits for the community. Furthermore, Hamdi (2014) said that participatory public policies can be developed when both those who govern and those who are governed have the ability and willingness to seek to build a system that is not only clear in its formulation, but also definite in its realization. In fact, the community is willing to be ordered/regulated by its behavior, it's just that the arrangements followed by the community are arrangements that they understand very well where it is going and what are the benefits for them. According to Green and Haines (2012, p.15), community development requires the involvement and participation of local residents in identifying the strategies they wish to use to improve their quality of life. This statement is emphasized by Adi (2013, p.231) that community participation is community participation in the process of identifying problems and potentials that exist in the community, selecting and making decisions about alternative solutions to deal with problems, implementing efforts to overcome problems, and community involvement in the process. Evaluate the changes that have occurred. Hamdi (2014, p.153) asserts, that one basic thing that must be remembered is that people can only participate optimally and conductively when they have high quality as citizens. In this case, the community needs to build its political culture along with its socio-economic development. Community participation is a reflection of the knowledge and understanding of the community regarding the administration of government and the public policy process as well as their volunteerism to contribute to the success of the administration of government and the public policy process. In this context, the development of community participation has relevance to the utilization of potential, resources, and technology that are actually owned by the community.

The implementation of a Child Friendly City in Depok is an urgent matter. Why? Depok City tends to experience dynamic social changes due to urbanization, physical development, housing development, industrial estate development and the center of economic growth as a buffer zone for the capital city of Jakarta. This condition will cause very rapid social change and will affect the child's situation. Depok City with an area of 200,292 km² has a population of 2 million people, of which 34.32% are in the age group of children up to 18 years old) (Department of Population and Civil Registry, Depok 2014). The problem of children in Depok City is increasingly complex both in terms of quantity and quality, including the large number of neglected children and street children, children dropping out of school, children being housemaids, undernourished toddlers, and many more. In addition, cases of violence against children and infant trafficking are also common. The problems that occur in children are evidence that the rights of children in Depok City have not been fulfilled.

Several research projects regarding the implementation of CFC in several cities in the world have been and are currently underway. However, these research projects generally examine the implementation of CFC policies only at the level of institutional strengthening (top-down) organized by the local government. There has not been a research that studies the dynamics of the implementation of CFC in the RW local community, even though this is very interesting to study because the RW is a neighbourhood where the community and children as the target community group are located. So that the environmental conditions of the RW community have a direct effect on the protection and fulfillment of children's rights. A child-friendly RW community will have a positive effect in creating a decent urban environment for children.

Based on the formulation of the problems and research gaps that have been stated above, this study aims to: 1) analyze the dynamics of implementing the CFC policy in the RW community that involves community participation and 2) analyze the role of community participation in realizing behavior change in the community in the Child Friendly RW environment.

II. METHOD

Based on the benefits, this research is a social policy research with a qualitative approach. By conducting research on a social policy, it is hoped that researchers can define social reality through identifying relevant issues and based on the interpretation of the research findings (Jamrozik 1991, 1997; Jamrozik & Nocella 1998, in Jamrozik 2009, p.52). The knowledge gained as a result of a social research can be used for various purposes, and is especially useful for 'disadvantaged populations', which in this study, are children.

The research is located in Depok City, West Java, Indonesia. The data collection techniques used were in-depth interviews and participant observation, as well as documentation studies. Data collection was carried out in 2013-2014 in 12 Child Friendly

The Implementation of Child-Friendly City Policy by the Local Community in Depok, Indonesia

RWs consisting of three Child Friendly RWs that were formed in 2011 (RW 06 Tanah Baru - Beji, RW 20 Cilangkap - Tapos and RW 17 Tugu - Cimanggis); eight child-friendly RWs formed in 2012 (RW 09 Baktijaya - Sukmajaya; RW 09 Pondok Petir - Bojongsari; RW 02 Cipayung Jaya - Cipayung, RW 13 Rangapan Jaya - Pancoran Mas, RW 08 Harjamukti - Cimanggis, RW 02 Sawangan Baru - Sawangan, RW 09 Kalibaru - Cilodong, and RW 18 Cimpaeun - Tapos); and one Child Friendly RW which was formed in 2013, namely RW 07 Kalibaru - Cilodong. The informants interviewed were the Head of the RW and/or the Chairperson of the Child Friendly RW Working Group, as well as local women organizations, children and the general public. The criteria for informants in this study are informants who have information about the implementation of CFC policies in the RW community along with changes in behavior in the Child Friendly RW community and informants who have information about community and children's participation in realizing CFC in the Child Friendly RW community.

This study uses data processing and analysis techniques proposed by Neuman (2006, p.468). Before starting the data analysis, various raw data that had been obtained through in-depth interviews, documentation studies and observations were collected. Raw data (or Data 1) consists of interview transcripts, field notes, photos, observations, documents and so on. Furthermore, in Data 2, data were obtained from data collection during the study, added with notes about emotions obtained during interviews and observations. The data collection was carried out to facilitate the coding process carried out at the next stage. The instruments used include voice recorders, smartphone cameras, and field notes. Qualitative data involves documentation of real events,

III. RESULTS AND ANALYSIS

A. Results (Field Findings)

1. Dynamics of Implementation of CFC Policies in Child-friendly neighbourhood, involving Community Participation: Initially, the Depok City Government began to develop a CFC policy by establishing a child-friendly neighbourhood at the community level which was formerly known as RW Cinta Anak (Love Children Community) since the end of 2010 which was initiated by the Depok City municipal. In its development, RW Cinta Anak changed its name to RW Ramah Anak (Child friendly community). The first Child Friendly community/ RW in Depok City is located in RW 06 Tanah Baru Village, Beji District, and was born on the initiative of the local community, not the government's initiative. Therefore, the Government established RW 06 Tanah Baru Beji as the pioneer of the first Child Friendly RW in Depok. Furthermore, the Government appointed other RWs as Child Friendly RWs, with the hope that by establishing Child Friendly RWs, Depok's goal to become a Child Friendly City can be realized soon. The establishment of Child Friendly RWs is carried out by the Depok City municipal by appointing certain RWs to be Child Friendly RWs. After being appointed as a child-friendly RW, the RW will get a set of play equipment consisting of swings, slides, seesaw and semi-circle. In addition, there is a child-friendly RW that gets sports equipment in the form of a ping pong table, volleyball net and ball; as well as bookcases and reading books. The appointment of a Child-friendly RW by the Depok City municipal does not go through the district and sub-district bureaucracy. The basis for the appointment of a Child-friendly RW also varies, there are those who volunteer, some are appointed for certain reasons and so on. However, almost all of the informants said they had never received any socialization regarding the CFC policy when they were appointed as child-friendly RW community. They admit that they are confused in implementing this policy because there are no guidelines and also do not know what is expected of the community in the RW after being declared a Child-friendly RW.

From the results of observations and in-depth interviews conducted during the research at the Child Friendly RW, the data obtained from the informants were presented in several categories, namely: 1) Public Understanding of the CFC Policy; 2) Implementation of Child Friendly RW; 3) Constraints faced; 4) Efforts to overcome obstacles. From interviews with informants in 12 Child-friendly RWs, there are two cases of Child-friendly RWs which are distinguished based on their level of understanding of CFC policies. In the first case of child-friendly RW, the level of community understanding is high and they feel they have a high moral responsibility to protect children from falling into negative activities, the community has a high initiative to create a child-friendly environment. Meanwhile, in the second case – child friendly RW, the people in the RW community do not have a high level of understanding about CFC policies so they are passive, don't care, and just wait for instructions from the government. In the first case of Child Friendly RW, the community carried out various activities to fulfill children's rights including the implementation of study hours, children's recitations, gardening, sports activities and so on. The community also shows participation in the form of citizen contributions to finance the construction of infrastructure for activities to fulfill children's rights, and become supervisors for children's activities.

From the explanations given by the informants regarding the dynamics of implementing CFC in the Child Friendly RW, it is clear that community participation is the main factor that plays a role in the dynamics of bottom-up CFC implementation in the RW community. However, it is undeniable that community participation is also influenced by the quality of society in each region.

The following is a table of data collected from observations and interviews with informants in the Child Friendly RW based on the identified categories.

The Implementation of Child-Friendly City Policy by the Local Community in Depok, Indonesia

Table 1. Dynamics of implementation of CFC policy in community

Community Understanding of CFC Policy	Implementation of Child Friendly RW community
People in several RWs understand because they have a high level of knowledge / can access information on their own.	Forms of activity: <ul style="list-style-type: none"> • Apply study hours • Take advantage of free time with sports, arts, culture, spiritual activities, gardening, learning to bake, tutoring, reading, drawing, storytelling. • Arrange camping activities • Involve children's participation • 'Parenting skills' education • <i>Car Free Day (family time)</i> • Local women organization activities
People who have a level of understanding: have moral awareness and responsibility (concerned with various cases that afflict children)	
Appointed as Child Friendly RW by local government without any socialization regarding the substance and benefits of the policy.	
The community does not know the government's expectations of them after appointing their environment to be a child-friendly RW.	Forms of Community Participation: <ul style="list-style-type: none"> • Initiating the formation of Child Friendly RW • Designing and coordinating activities to fulfill children's rights • Accompanying and supervising activities to fulfill children's rights • Fees to finance these activities • Contributions for building children's activity facilities.
The community does not know the substance and benefits of the CFC policy.	
Obstacles encountered	
Economic and social: <ul style="list-style-type: none"> • Poverty / there are still many pre-prosperous families so that the fulfillment of children's rights is not a priority. • There is no budget from the Government to finance child-friendly RW activities. • Low level of education/knowledge • There is no socialization from the government • Limited infrastructure for education and child health • The existence of an internet cafe 	Efforts to Overcome Obstacles
	Expected efforts from the Government: <ul style="list-style-type: none"> • Dissemination of the substance, objectives and benefits of the CFC policy • Monitoring and evaluating the implementation of Child Friendly RW • Establishing a Child Friendly RW Working group forum as a place to share information and experiences • Involving the local leaders
Political <ul style="list-style-type: none"> • There is resistance from residents • The absence of the local leaders. • Mayor's Commitment 	Efforts from the Community: <ul style="list-style-type: none"> • Hold regular community meetings to discuss various problems in the RW, including children's issues. • Conducting community contributions to finance activities for the use of children's free time • As much as possible involve community participation

2. The Role of Community Participation in Realizing Behavior Change in Communities in a Child Friendly RW:

Another aspect that must be considered in implementing the CFC policy in the community is the role of community participation in realizing behavioral changes in the community in the Child Friendly RW. Changes in behavior that occur become a benchmark for the effectiveness of implementing the CFC policy in the RW. In this study, the behavioral changes studied were not only behavioral changes in children, but also behavioral changes in parents and society in general. Changes in behavior that occur in the community in the Child Friendly community, both those that occur in children, parents and the community in general are clear evidence of the success of implementing the CFC policy in the Child Friendly RW community. Changes in behavior in the target community in RW 06 Tanah Baru Beji, RW 20 Cilangkap Tapos, RW 09 Baktijaya Sukmajaya and RW 09 Pondok Petir Bojongsari was caused by several factors, namely: the formation of a Child Friendly RW was based on the initiative of the citizens (not a unilateral appointment by the Government) - where the initiative departed from moral responsibility and the agreement of the citizens to create a more suitable environment for the children. These initiatives and agreements then make the community participate voluntarily in initiating and carrying out activities as an effort to fulfill the rights of children in their environment. These initiatives and agreements then make the community participate voluntarily in initiating and carrying out activities as an effort to fulfill the rights of children in their environment.

The following is a table regarding data on behavior change in the first case of Child-friendly RW that was identified:

The Implementation of Child-Friendly City Policy by the Local Community in Depok, Indonesia

Table 2. Changes in behavior in the child-friendly RW community

Behavior Changes in Children, Parents and Communities in Child-friendly RW		
Before	Activity	After
RW 06 Tanah Baru, Beji		
Children often hang out at night playing cards, smoking, drinking alcohol. They don't have any activities in the afternoon, so they often go to the internet cafe. Parents do not ask the child's aspirations. RT/RW meetings do not adopt children's aspirations.	Implementation of study hours, Saung Pintar, Zak Sarga Studio, Child Friendly Madrasah, involve children in community meetings.	Children are more daring to express their aspirations. More diligent in doing homework, studying and reciting. No more internet cafes. Parents understand more about their children's rights. Parents listen to their children's aspirations. The community is more communicative, regularly comes to RT and RW meetings. More adopting children's aspirations.
RW 20 Cilangkap, Tapos		
Children often wander outside the house, parents are busy and don't care, society is not as busy as it is now.	Application of study hours, sports activities, TPA, Reading Gardens, Car Free Day	Children become healthier, happier and more energetic. Achievement in school increases. Parents are actively involved as Task Force overseeing the implementation of study hours. Parents become more communicative and take advantage of quality time with family on Sunday morning Car Free Day. The community is more sociable and participates in the task force. Voluntary contributions to build sports facilities and play equipment.
RW 09 Baktijaya, Sukmajaya		
Teenagers often hang out on the street until late at night, smoking, drinking and gambling. Parents do not understand the rights of children, and are not communicative with children. Society is individualistic.	Filling study hours with coordinated tutoring activities. There are sports activities, arts, tresik music, the Koran and the Youth Taklim Council. Embrace children and youth. Ramadan Carnival.	Children's achievement in school increases. Take the time to join the tutoring together, and not go to the internet cafe anymore. Parents better understand their children's rights and become more open to their children. Voluntary community contributions to build multipurpose buildings and support children's activities.
RW 09 Pondok Lightning Bojongsari		
The children often go to the internet cafe, often play with gadgets, and go to the mall on weekends. Parents are busy working and do not understand parenting. People don't care	Gardening, learning to make cakes, storytelling, drawing, learning together, sorting waste (Waste Bank), parenting skills for mothers.	Children's talents are channeled. Children are more cheerful, have many skills. No more going to internet cafes or playing gadgets. Parents better understand parenting skills, better understand children's rights and support children's positive activities. The community wants to support children's activities. Participate in gardening activities with the children. Participate in contributions to build multipurpose building facilities.

Participation is influenced by a high level of community quality with a high level of knowledge and understanding of the substance and benefits of the CFC policy, which will determine the success of the implementation of Child Friendly RW. Participation, level of knowledge, coupled with consistently implemented activities, and the involvement of children - this is what makes behavioral changes in the target community occur as expected. Changes in behavior in the community in the RW are performance or the result of implementing the CFC policy. Although behavior changes have not occurred in all Child Friendly RWs, behavior changes that have occurred in several Child Friendly RWs that have been running well, can be used as an example and become an encouragement for people in other RWs community to implement this CFC policy in their RWs. Thus, the implementation of the CFC policy at the city level in Depok City is currently still running in a top-down way from municipal to

The Implementation of Child-Friendly City Policy by the Local Community in Depok, Indonesia

Child-friendly RWs community without involving the local region officials, and without any feedback path from the community in Child-friendly RWs to the Government (municipal). The absence of a bottom-up feedback path is indicated by the absence of socialization, monitoring and evaluation or assistance by the Government for Child Friendly RWs. and without any feedback from the community in the Child Friendly RW to the Government.

B. Analysis (Discussion)

1. Dynamics of Implementation of CFC Policies in Child-friendly neighbourhood, involving Community Participation:

The understanding of the community as a community in the RW environment regarding the CFC policy is a key factor in the implementation of bottom-up policies. An understanding of the substance and benefits of the policy will affect the level of community participation. As stated by Hamdi (2014), public participation is a reflection of the knowledge and understanding of the community regarding government administration and the public policy process as well as their volunteerism to contribute to the success of the government administration process and the public policy process. When depicted in a scheme, the comparison of the level of community knowledge that affects the motivation for community participation in the first case and the second case towards the implementation of Child Friendly RW can be seen in Chart 1. This internal motivation has resulted in a fairly high level of community participation, so that the implementation of the Child Friendly RW is going well. Communities within the RW design, coordinate, assist and supervise activities to fulfill children's rights, even though there is no socialization from the Government regarding the substance, objectives and benefits of the CFC policy.

However, Hamdi emphasized that one basic thing that must be remembered is that the community can only participate optimally and conductively when they have high quality as citizens. In this case, the community needs to build its political culture along with its socio-economic development. People who have high quality are people who have knowledge and understanding of government administration and public policy processes and their volunteerism to contribute to the success of government administration and the public policy process. In this context, the development of community participation has relevance to the utilization of potential, resources, and technology that are actually owned by the community. The higher the quality of society in an area, the higher level of participation is.

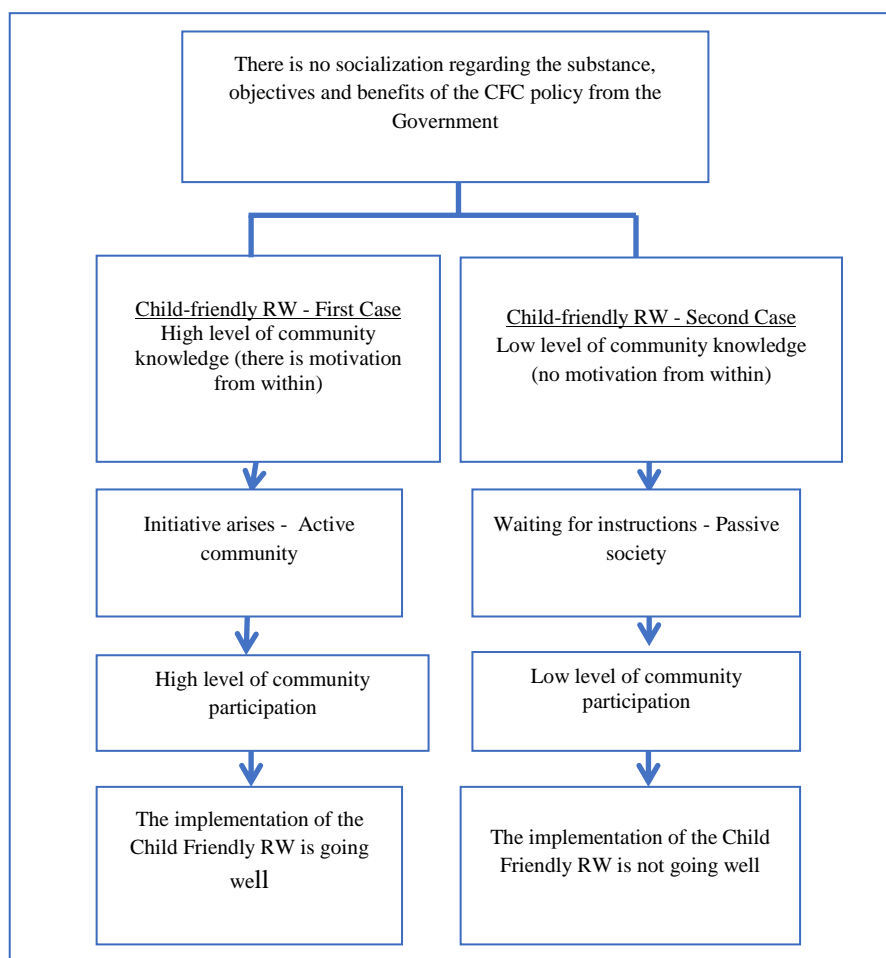


Chart 1. Motivation for community participation

The Implementation of Child-Friendly City Policy by the Local Community in Depok, Indonesia

In addition, community participation is also influenced by assets or community capital owned by the community in the community. According to Green and Haines (2012) there are seven Capitals which is an inherent asset in every society which can sometimes be an advantage of a society and on the other hand can also be seen and identified as several aspects that are weaknesses in that society.. When referring to the theory of community assets by Green and Haines (2012), the seven community assets owned by the child-friendly RW in the first case are as follows:

Table 3. Community Capital for Child Friendly RW (first case)

Community Capital	RW 06 Tanah Baru Beji	RW20 Cilangkap Tapos	RW09 Baktijaya Sukmajaya	RW09 Pondok Lightning Bojongsari
Physical Capital	Saung Pintar, Child Friendly Madrasah, PAUD, Studio, Posyandu	Sports Field, TPA, Posyandu, Playground	Multipurpose Building, Sports Field, Playground	Posyandu Building, Garden, Playground
Financial Capital	Community self-help contributions	Community self-help contributions	Community self-help contributions	Community self-help contributions
Environmental Capital	-	-	-	-
Technology Capital	TV media in accessing the latest news	TV and internet media in accessing the latest news	TV and internet media in accessing the latest news	TV and internet media in accessing the latest news
Human Capital	change agent, working group, and local women organization	change agent, working group, and local women organization	change agent, working group, and local women organization	change agent, working group, and local women organization
Social Capital	Having the same vision and sense of moral responsibility to prepare children as the next generation to be strong.	Having the same vision and sense of moral responsibility to prepare children as the next generation to be tough.	Having the same vision and sense of moral responsibility to prepare children as the next generation to be strong.	Having the same vision and sense of moral responsibility to prepare children as the next generation to be strong.
Political Capital	As the pioneer of RW worthy of children, RW 06 has political capital.	Have access to the Lurah who initiated the Child Friendly RW in RW 20	Do not have political capital	Has no political capital.

Therefore, from this study we can find out about the variables that affect community participation, namely the quality of the community (people who have a level of knowledge about the goals and benefits of policies and volunteerism to contribute), community capital, and the existence of change agents that involve the community in formulating policy. When depicted in a schematic, it is as follows:

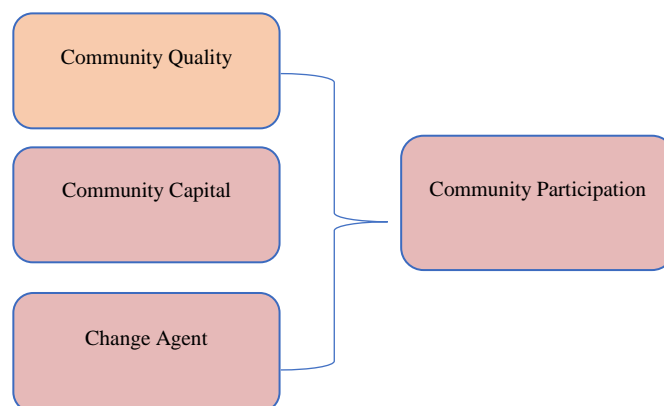


Chart 2. Variables affecting community participation

The Implementation of Child-Friendly City Policy by the Local Community in Depok, Indonesia

2. The Role of Community Participation in Realizing Behavior Change in Communities in a Child Friendly RW: Policy implementation in relation to CFC development is also referred to as intervention in social development, where the interventions carried out include interventions directed at the emergence of changes in aspects of knowledge, beliefs, attitudes, and intentions.) individuals, which in this case are the policy makers, both the city government and the community (target community groups) (Adi, 2013). This change appeared in the community in the first case of Child-friendly RW. Parsons (2006), argues that what is really important in policy implementation is the relationship between policy makers and policy implementers. Changes in behavior in the community in the Child Friendly RW can occur because of the high community participation in the four RWs. The RW environment is not too big, making the relationship between policy makers (community leaders, RW administrators and child friendly working group) very close to policy implementers as well as target communities (local women organization, general public, parents and children). So that In the implementation of Child Friendly RW, the community acts as an actor (subject) and at the same time an object or target group, as stated by Alam & Ali (2012), so it should be understood that the existence of the community here is not only as actors or subjects of policies, but also as objects or target groups. The close relationship between policy makers and target communities has resulted in consistent, uniform and clear communication, through regular RT meetings held every week and regular RW meetings held every month. This indicates that the community in the child-friendly RW in the first case has high social capital, in addition to other capitals in community capital (Green and Haines, 2012). Social capital according to Adi (2013) is a norm that binds the community in it. In the child-friendly RW case, the community in the first child-friendly RW shared a vision to protect, fulfill and respect children's rights. When looking at the typology of participation according to Brinkerhoff & Crosby (in Hamdi, 2013) the participation that occurs in child-friendly RW in the four RWs is the type of 'empowerment'. With this type, participation is recognized in the form of the transfer of control over decision making, resources, and activities from the initiator to other parties. Empowerment is carried out when other parties, who, if acting independently and in their own interests, can carry out their policy mandates without significant government involvement and oversight. Even further, the fulfillment of the rights of children in clusters 1 to 4 in child-friendly RWs in particular and the implementation of the CFC policy at the City level in general is to prevent (prevention measures) so that children's problems do not occur. This is in accordance with what Adi (2013) emphasized, that in social welfare science, intervention patterns are more focused on developmental and prevention aspects. Therefore, the determination of 31 indicators by Ministry of Women Empowerment and Child Protection that must be fulfilled by cities/districts that are seriously committed to organizing CFC is also designed as a prevention measure against children's problems, especially indicators in fulfilling rights which are included in clusters 1 to cluster 4. answer the child welfare crisis which has only focused on overcoming children's problems. Since the implementation of the KLA policy, both at the City level and at the Child Friendly RW, the community has only just understood and realized that by fulfilling children's rights, the impact felt is that problems on children can be prevented.

When referring to the definition of community participation from Adi (2013) where it is said that Community participation is community participation in the process of identifying problems and potentials that exist in the community, selecting and making decisions about alternative solutions to deal with problems, implementing efforts to overcome problems, and community involvement in the process of evaluating changes that occur – so, in the first case of Child Friendly RW the community has carried out all the prerequisites for community participation. For more details, we can see in the following table:

Table 4. Definition of community participation according to Adi (2013) vs community participation in the first case child-friendly RW

Definition of Community Participation (Adi, 2013)	First case of Child Friendly RW Community
Community participation in problem identification	The community identified a problem where many children did not have positive leisure time activities, and became victims of internet cafes and gadgets. People worry that children will fall into negative things.
Community participation in identifying potential	The community identifies the community capital they have.
Selection and decision making about alternative solutions to deal with problems	Through deliberation and consensus initiated by the change agent, the community decided to implement the KLA policy in the RW . environment
Implementation of efforts to solve problems	Carry out various activities to fulfill children's rights in order to create a child-friendly environment.
Community involvement in the process of evaluating the changes that occur	The community perceives and evaluates behavioral changes that occur in children, parents, and the general public.

IV. CONCLUSION AND RECOMMENDATION

Conclusions from the analysis regarding The dynamics of the implementation of CFC in the Child Friendly RW are as follows. In the first case of Child-friendly RW, the community has three variables that have been identified, namely: the quality of the community (the level of community knowledge about the benefits of policies and their volunteerism to contribute to the achievement of policy objectives), community capital attached to the community, and the presence of change agents or actors of change that mobilizes and engages the community. It is these three variables that make motivational impulses come from within the community which creates initiatives that lead to high community participation and manifests in various implementation of activities to fulfill children's rights, as well as in the form of participation of parents and society in general which are carried out in mutual cooperation.

In the study it was found that there is a gap between the implementation of CFC policies at the city level and the implementation of CFC policies in the RW environment, where policy implementers at the city level do not communicate and coordinate with policy implementers in the Child Friendly RW environment. Communication only goes one way from the CFC Task Force to the management of the Child Friendly RW without involving bureaucrats in the local officials, and there is no reciprocal communication line from the community in the RW to the Government in terms of providing feedback. This causes the integrated condition does not occur.

While the conclusions from the above analysis the role of community participation in realizing behavior change in the community in the Child Friendly RW is, that the community in the first case of Child Friendly RW is an empowered and creative community. They can act independently and in their own interests, and can carry out policy mandates without significant government involvement and oversight. So in the first case of child-friendly RW, there is a change in behavior as expected. Since the implementation of the CFC policy in the Child Friendly RW, the community feels that by fulfilling children's rights, the impact felt is a change in children's behavior which has an impact on preventing problems with children.

Furthermore, from these conclusions, the researchers formulated the following recommendations. In the dynamics of implementing the CFC policy in Child Friendly RWs, it was found that the socialization regarding the substance, objectives and benefits of the CFC policy had not been carried out by the Government before appointing an RW to become a Child Friendly RW. Therefore, the Government needs to carry out socialization activities more intensively and effectively so that the public understands the objectives and benefits of the CFC policy. Socialization can also be in the form of installing banners regarding the fulfillment of children's rights in the RW environment. In addition, socialization regarding the substance and benefits of CFC is also useful so that the community has awareness and moral responsibility to consider children as an investment in the future. However, the community in the second case of Child-friendly RW, In fact, we can find many everywhere. This community belongs to a group of people who are of low quality – who do not have awareness or knowledge of government administration and public policies. They are also not a resourceful community and are not aware of the potential of their RW community. They are passive, do not have the initiative to voluntarily contribute to the realization of the CFC policy. People who belong to this group will feel their own loss. Especially if they know about the benefits of the CFC policy, which is actually for the good of the community itself. Therefore, people need to increase their awareness of the surrounding environment, to the administration of government and to public policies that have great benefits for the community. In addition, the public must also be proactive in broadening their horizons by following developments in the surrounding environment by accessing the latest information from both print and electronic media.

ACKNOWLEDGMENT

I would like to express my great appreciation to Prof. Isbandi Rukminto Adi, Ph.D for his valuable and constructive suggestion during this research work. I would like also to thank the Mayor of Depok City and all the officials of Depok Government Office who supported me with all the data needed. I would also to extend my gratitude to all the informants of the child-friendly RW for the time and enthusiasm of answering my questions during in-depth interviews. Last but not least my gratitude to my family for the continues support.

REFERENCES

- 1) Adi, Isbandi Rukminto. (2013). *Social Welfare (Social Work, Social Development, and Development Studies)*, Jakarta: Rajawali Pers.
- 2) Adi, Isbandi Rukminto. (2013). *Community Intervention & Community Development as Community Empowerment Efforts*, Jakarta: Rajawali Pers.
- 3) Ali, H. Faried and Alam, Andi Syamsu (2012). *Government Policy Studies*, Bandung: Refika Aditama.
- 4) Green, Gary Paul & Haines, Anna (2012) *Asset Building and Community Development*. Thousand Oaks, California: Sage Publications, Inc.
- 5) Hamdi, Muchlis. (2014). *Public Policy, Process, Analysis, and Participation*, Publisher Graha Indonesia, Bogor.
- 6) Howe, David. (2009). *A Brief Introduction to Social Work Theory*, Palgrave Macmillan, London UK.
- 7) Ife, Jim. (2013). *Community Development in an Uncertain World*, Cambridge University Press, UK.
- 8) Jamrozik, Adam (2009). *Social Policy in Post-Welfare State*, Pearson Education Australia, NSW.

The Implementation of Child-Friendly City Policy by the Local Community in Depok, Indonesia

- 9) Louv, Richard. (1990). *Childhood's Future*, Houghton-Mifflin, USA
- 10) Neuman, Lawrence (2006). *Social Methods Research: Quantitative and Qualitative Approach*, Allyn & Bacon, Boston.
- 11) Rubin, Allen & Babbie, Earl (2008). *Research Methods for Social Work*, Thomson Brooks/Cole, Belmont, CA.
- 12) Shireman, Joan (2003). *Critical Issues in Child Welfare*, New York: Colombia University Press.
- 13) Wallace, MM (2001). *International Human Rights*. Sweet and Maxwell, London

Journals

- 1) D'Onofrio, Eve Marie (2004). *Faith, Family, and Freedom: the Battleground Over Children's Rights* – Dissertation, Department of Political Science and the Committee on Graduate Studies of Stanford University.
- 2) Quennerstedt, Ann (2009). *Children's Rights in Education - Transforming Universal Claims into New Zealand Policy*, *New Zealand Journal of Educational Studies*, New Zealand.
- 3) Sousa, Custóhim & Araújo, Carina (2011). *The Ethical Rights of Children: Yesterday and Today*, Publication info: *Pediatric Nursing* 37.3 (May/Jun 2011): 141-4.
- 4) UIRC (Unicef Innocenti Research Centre) (2004). *Building Child Friendly Cities: A Farmework of Action*, Innocenti Publications 2004, Italy.

Websites

- 1) Child Welfare, www.childwelfare.gov, accessed on December 10, 2015
- 2) Child-friendly districts/cities, www.kla.or.id, accessed on January 20, 2014
- 3) Child-friendly districts/cities, www.kotalayakanak.blogspot.com, accessed on January 21, 2014.
- 4) Depok City, www.depok.go.id, accessed on 26 September 2014
- 5) Satudata.bappeda.depok.go.id, accessed on 15 September 2015
- 6) Unicef, www.unicef.org, accessed on January 20, 2014
- 7) Unicef Innocenti Research Centre, www.unicef-irc.org, accessed on January 20, 2014

Unicef Innocenti Research Center Projects (12)

- 1) Unicef Innocenti Research Centre, 2003a. Christchurch City Council, New Zealand, <http://www.childfriendlycities.org>, accessed on 23 January 2014
- 2) Unicef Innocenti Research Centre, 2003b. Municipality of Bogota, Colombia. <http://www.childfriendlycities.org>, accessed on 23 January 2014
- 3) Unicef Innocenti Research Centre, 2003c. Education for all Calcutta's Children, India. <http://www.childfriendlycities.org>, accessed on 23 January 2014
- 4) Unicef Innocenti Research Centre, 2003d. Basic Education for the hard to reach urban child, Bangladesh. <http://www.childfriendlycities.org>, accessed on 23 January 2014
- 5) Unicef Innocenti Research Centre, 2004a. Child-friendly Movement, Philippines. <http://www.childfriendlycities.org>, accessed on 23 January 2014
- 6) Unicef Innocenti Research Centre, 2004b. La citta dei bambini (Children's City), Rome Italy. <http://www.childfriendlycities.org>, accessed on 23 January 2014
- 7) Unicef Innocenti Research Centre, 2004c. Municipal Seal of Approval, Ceara, Brazil. <http://www.childfriendlycities.org>, accessed on 23 January 2014
- 8) Unicef Innocenti Research Centre, 2010a. City for Children, Essen, Germany. <http://www.childfriendlycities.org>, accessed on 23 January 2014
- 9) Unicef Innocenti Research Centre, 2010b. Child Friendly City at London, UK. <http://www.childfriendlycities.org>, accessed on 23 January 2014
- 10) Unicef Innocenti Research Centre, 2010c. Child Friendly Cities, France. <http://www.childfriendlycities.org>, accessed on 23 January 2014
- 11) Unicef Innocenti Research Centre, 2010d. Ciudades Amigas de la Infancia (Child Friendly Cities), Spain. <http://www.childfriendlycities.org>, accessed on 23 January 2014
- 12) Unicef Innocenti Research Centre, 2010e. Child Friendly City in Bam, Iran. <http://www.childfriendlycities.org>, accessed on 23 January 2014

Other Documents

- 1) Depok in Numbers, 2013
- 2) Data on Gender and Children in Depok City 2013
- 3) Document of the Department of Population and Civil Registration, 2014
- 4) Depok City Social and Employment Service Document, 2014
- 5) Depok Police PPA Unit Report Document, July 2014

The Implementation of Child-Friendly City Policy by the Local Community in Depok, Indonesia

- 6) P2TP2A Report Document Depok City, July 2014
- 7) Definition of the Convention on the Rights of the Child, KPPPA Document

Regulations (Laws / Government Regulations / Regional Regulations)

- 1) Presidential Decree No. 36 of 1990 concerning Ratification of the Convention on the Rights of the Child.
- 2) Depok City Regional Regulation No. 15 of 2013, concerning the Implementation of a Child Friendly City
- 3) Depok City Regional Regulation No. 08 of 2010 concerning Management and Implementation of Education
- 4) Regulation of the Minister of State for Women's Empowerment and Child Protection of the Republic of Indonesia No. 11 of 2011 concerning the Development of Child Friendly City Policies
- 5) Regulation of the Minister of State for Women's Empowerment and Child Protection of the Republic of Indonesia No. 12 of 2011 concerning Child Friendly City Indicators
- 6) Regulation of the Minister of State for Women's Empowerment and Child Protection of the Republic of Indonesia No. 13 of 2011 concerning Guidelines for the Development of Child Friendly Cities
- 7) Regulation of the Minister of State for Women's Empowerment and Child Protection of the Republic of Indonesia No. 14 of 2011 concerning Guidelines for Evaluation of Child Friendly Cities
- 8) 1945 Constitution
- 9) Law No.23/2002 on Child Protection
- 10) Law No.35 of 2014 concerning the revision of Law No.23 of 2002 concerning Child Protection



There is an Open Access article, distributed under the term of the Creative Commons Attribution – Non Commercial 4.0 International (CC BY-NC 4.0) (<https://creativecommons.org/licenses/by-nc/4.0/>), which permits remixing, adapting and building upon the work for non-commercial use, provided the original work is properly cited.